

# How to upload ChiroHabitats files to the server

Version 08

- 1) Create the sampling location in the ChiroHabitats section if it's a new Location, or enter your Location if it has been created before.
- 2) Click on "Add a Session" in your Location page.
- 3) Click on "Save and add Audios."
- 4) A new tab will open where you can upload all the files.

New session at Museu la Tela - prova

Specify the dates of the detector setting, recordings start, recording end and the detector collection.

Setting \* dd/mm/yyyy

Start \* dd/mm/yyyy

End \* dd/mm/yyyy

Collecting \* dd/mm/yyyy

Detector \* Select...

Atlas of mammals of Catalonia

Spain's Atlas \* Select...

Comments

Cancel Save Save and add Audios

© 2023 Ratpenats

## Ratpenats Uploader

Session: L000295\_2021\_05\_14

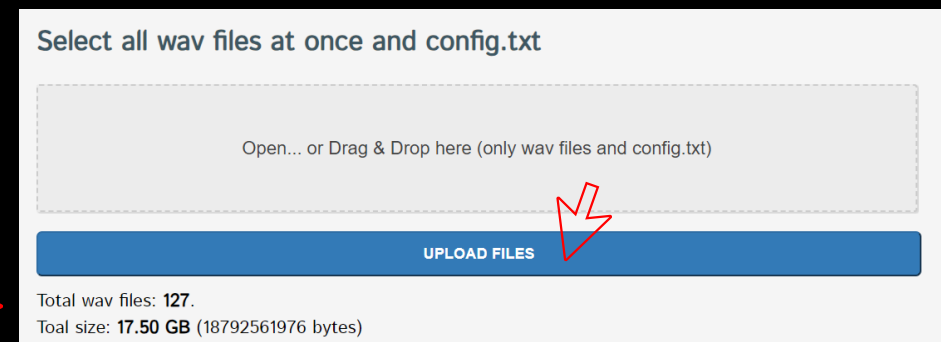
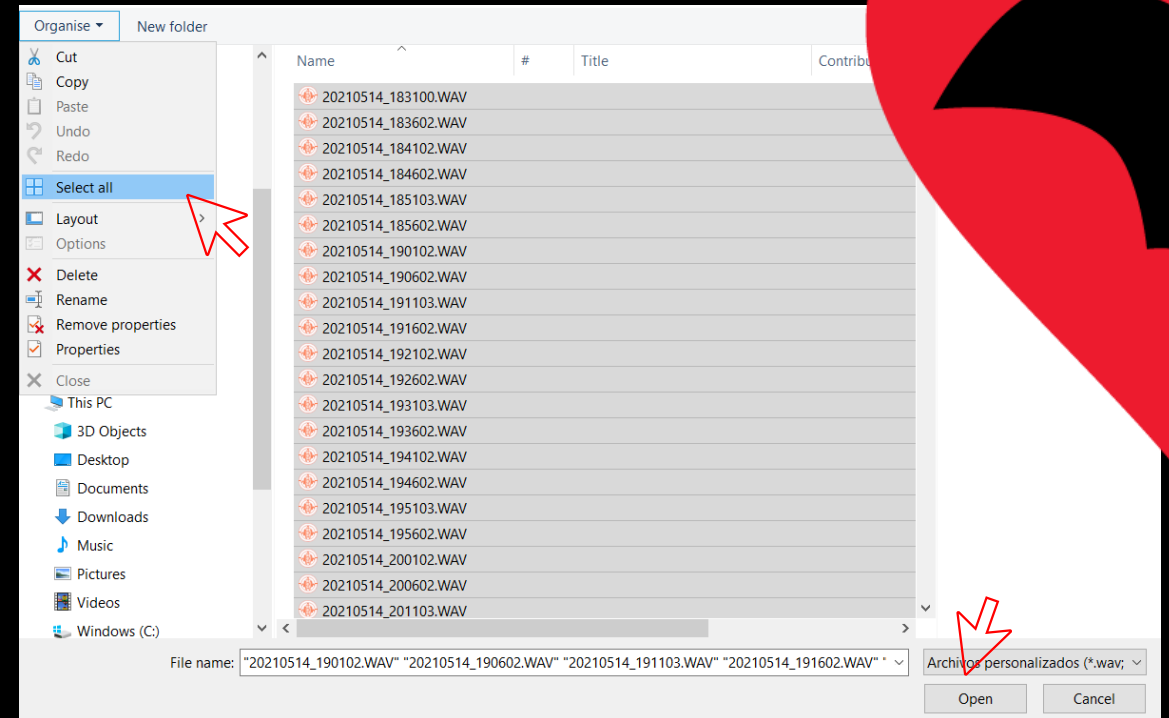
Select all wav files at once and config.txt

Open... or Drag & Drop here (only wav files and config.txt)

# How to upload ChiroHabitats files to the server

Version 08

- 5) Click on "Open" and select all the ".wav" files from the SD card, including the "CONFIG.txt" file and then click "Open."
- 6) Alternatively, you can drag all the files directly from the folder into the Drag & Drop box.
- 7) Once uploaded, and if there are no errors, the "Upload Files" button will appear.
- 8) Click on it, and the upload process will begin.  
*Note: If the "Upload Files" button does not appear, it means there is an error. See the next page for details.*
- 9) It's important to verify the total number of files you are uploading.



# How to upload ChiroHabitats files to the server

Version 08

## 10) IMPORTANT:

- The upload process may take around an hour.
- Simultaneous uploads are not allowed.
- Do not close the tab until the upload is successful.
- Once the upload process is complete ("Successfully uploaded session"), you can close the tab.
- Ensure your computer does not go into hibernation or suspension, as it would interrupt the upload.
- If using an internet cable, the upload process will be much faster.*

## 11) Common errors:

- Inconsistent start and end dates
- Empty files
- Missing "Config.txt" file"

Incoherent set of files according to config.txt:

Please select a correct set of files /Data min inconsistent:Localitat/20210513/wav/20210514

There are an empty wav file: 20210107\_053000.WAV

Please select a correct set of files

There is no config.txt:

Please select a correct set of files

12) Once the process is finished, you will receive an email with a link to download the processed and **pre-classified** files. This email may take up to 48 hours to arrive.

All files uploaded: 123 / 123

100%

Successfully uploaded session:

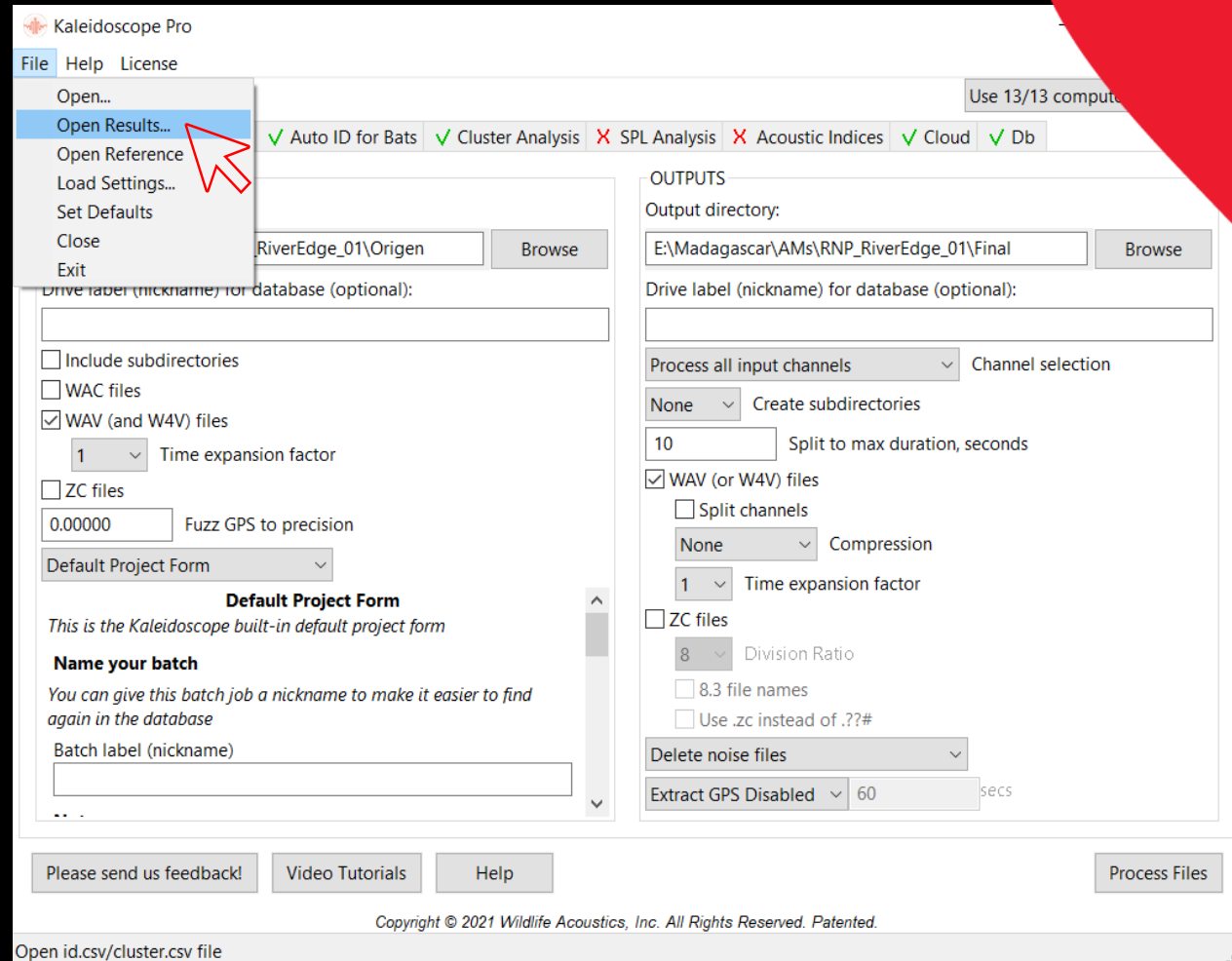
WE WILL SEND YOU AN EMAIL WITH THE RESULTS

# How to verify the automatic species identification

Version 08

13) In order to verify the automatic species identification, follow these steps:

- Decompress the downloaded file with the results.
- Open the Kaleidoscope program.
- Click on “File” and then “Open Results”.
- Select the `id.csv` file that you have downloaded.



# How to verify the automatic species identification

Version 08

e) Two windows will appear: a table showing the identifications and the sonogram window.

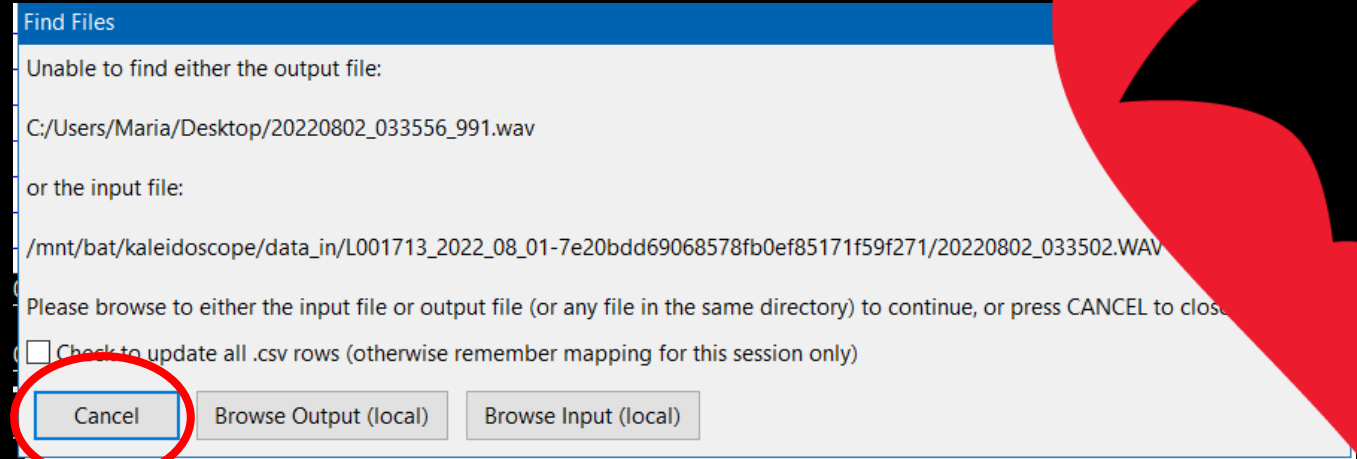
f) **ATTENTION: if an error message appears, click on "Cancel".\***

\* This is because the file we are trying to open is not there as it is a noise file.

g) Click on **"Auto ID"** to sort and group all the files by species.

h) Click on the first line from the table to reopen the sonogram window.

i) **It's mandatory to check ALL files, with the exception of *Pipistrellus* spp. species (PIPPIP, PIPPYG, PIPNAT, PIPKUH)**



C:\Users\Maria\Desktop\id.csv

	FOLDER	IN FILE	OUT FILE FS	OUT FILE ZC	AUTO ID	PULSES
1		20220801_195402.WAV	20220801_195751_962.wav		VESMUR	5
2		20220802_034502.WAV	20220802_034711_978.wav		TADTEN	2
3		20220802_033502.WAV	20220802_033556_991.wav		TADTEN	2
4		20220802_033502.WAV	20220802_033606_989.wav		TADTEN	2
5		20220802_032502.WAV	20220802_032931_955.wav		TADTEN	2
6		20220802_023502.WAV	20220802_023736_974.wav		TADTEN	4
7		20220802_023502.WAV	20220802_023741_973.wav		TADTEN	5
8		20220802_023502.WAV	20220802_023746_973.wav		TADTEN	5
9		20220802_021002.WAV	20220802_021206_979.wav		TADTEN	2
10		20220802_013002.WAV	20220802_013436_954.wav		PIPPYG	11
11		20220802_013002.WAV	20220802_013441_953.wav		PIPPYG	2
12		20220802_010002.WAV	20220802_010036_994.wav		PIPPYG	5

# How to verify the automatic species identification

Version 08

## 14) IMPORTANT:

- a) It is necessary to check/tag ALL the files using using the LABELS provided by the Bat Monitoring Programme. (If they do not appear, check the tutorial to upload them).
- b) Your classification will appear in the “Manual ID” column of the table. This field CAN NOT be empty, except for *Pipistrellus* spp.)
- c) DO NOT check the files labelled as “Noise” as those have been eliminated during the processing.

	FOLDER	IN FILE	OUT FILE	OUT FILE FS	OUT FILE ZC	AUTO ID	PULSES	MATCHING	MATCH RATIO	MANUAL ID
1	20201231_171802	20201231_171802.WAV	20201231_171802_000	20201231_171802_000	PIPPYG	2	1	0.500000	Noise	
2	20201231_172000	20201231_172000.WAV	20201231_172000_000	20201231_172000_000	PIPPYG	3	3	1.000000	Noise	
3	20201231_171802	20201231_171802.WAV	20201231_171802_000	20201231_171802_000	PIPPYG	2	2	1.000000	Noise	
4	20201231_172804	20201231_172804.WAV	20201231_172924_000	20201231_172924_000	PIPPYG	2	2	1.000000	Noise	
5	20201231_173305	20201231_173305.WAV	20201231_173355_000	20201231_173355_000	PIPPYG	2	2	1.000000	Noise	
6	20201231_181313	20201231_181313.WAV	20201231_181313_000	20201231_181313_000	PIPPYG	23	15	0.652000		
7	20201231_180311	20201231_180311.WAV	20201231_180346_000	20201231_180346_000	PIPPYG	5	3	0.600000		
8	20201231_180311	20201231_180311.WAV	20201231_180351_000	20201231_180351_000	PIPPYG	23	13	0.565000		
9	20201231_181814	20201231_181814.WAV	20201231_182024_000	20201231_182024_000	PIPPYG	39	24	0.615000		
10	20201231_180311	20201231_180311.WAV	20201231_180556_000	20201231_180556_000	PIPPYG	22	18	0.818000		
11	20201231_181313	20201231_181313.WAV	20201231_181643_000	20201231_181643_000	PIPPYG	5	2	0.400000		
12	20201231_181313	20201231_181313.WAV	20201231_181648_000	20201231_181648_000	PIPPYG	20	12	0.600000		
13	20201231_180812	20201231_180812.WAV	20201231_181137_000	20201231_181137_000	PIPPYG	22	12	0.545000		
14	20201231_180812	20201231_180812.WAV	20201231_181142_000	20201231_181142_000	PIPPYG	2	2	1.000000		
15	20201231_180812	20201231_180812.WAV	20201231_181247_000	20201231_181247_000	PIPPYG	24	21	0.875000		
16	20201231_180812	20201231_180812.WAV	20201231_181252_000	20201231_181252_000	PIPPYG	16	9	0.565000		
17	20201231_182816	20201231_182816.WAV	20201231_182841_000	20201231_182841_000	PIPPYG	3	3	1.000000		
18	20201231_182816	20201231_182816.WAV	20201231_182846_000	20201231_182846_000	PIPPYG	20	11	0.550000		
19	20201231_183317	20201231_183317.WAV	20201231_183337_000	20201231_183337_000	PIPPYG	12	7	0.583000		
20	20201231_184319	20201231_184319.WAV	20201231_184529_000	20201231_184529_000	PIPPYG	19	11	0.579000		
21	20201231_184319	20201231_184319.WAV	20201231_184529_000	20201231_184529_000	PIPPYG	19	13	0.684000		
22	20201231_185822	20201231_185822.WAV	20201231_185857_000	20201231_185857_000	PIPPYG	21	14	0.667000		
23	20201231_192828	20201231_192828.WAV	20201231_192908_000	20201231_192908_000	PIPPYG	9	3	0.333000		
24	20201231_192828	20201231_192828.WAV	20201231_192913_000	20201231_192913_000	PIPPYG	2	2	1.000000	Noise	
25	20201231_200836	20201231_200836.WAV	20201231_200836_000	20201231_200836_000	PIPPYG	2	2	1.000000	Noise	
26	20201231_201838	20201231_201838.WAV	20201231_202038_000	20201231_202038_000	PIPPYG	2	1	0.500000	Noise	
27	20210101_004431	20210101_004431.WAV	20210101_004521_000	20210101_004521_000	PIPPYG	2	2	1.000000	Noise	
28	20210101_010136	20210101_010136.WAV	20210101_010136_000	20210101_010136_000	PIPPYG	2	2	1.000000	Noise	
29	20210101_012140	20210101_012140.WAV	20210101_012205_000	20210101_012205_000	PIPPYG	2	1	0.500000	Noise	
30	20210101_011138	20210101_011138.WAV	20210101_011448_000	20210101_011448_000	PIPPYG	2	2	1.000000	Noise	
31	20210101_011639	20210101_011639.WAV	20210101_011949_000	20210101_011949_000	PIPPYG	2	2	1.000000	Noise	
32	20210101_012140	20210101_012140.WAV	20210101_012420_000	20210101_012420_000	PIPPYG	2	2	1.000000	Noise	
33	20210101_012641	20210101_012641.WAV	20210101_012641_000	20210101_012641_000	PIPPYG	3	3	1.000000	Noise	
34	20210101_012140	20210101_012140.WAV	20210101_012525_000	20210101_012525_000	PIPPYG	2	2	1.000000	Noise	
35	20210101_012641	20210101_012641.WAV	20210101_012846_000	20210101_012846_000	PIPPYG	2	2	1.000000	Noise	
36	20210101_012641	20210101_012641.WAV	20210101_013056_000	20210101_013056_000	PIPPYG	2	1	0.500000	Noise	
37	20210101_013643	20210101_013643.WAV	20210101_014053_000	20210101_014053_000	PIPPYG	2	2	1.000000	Noise	
38	20210101_021651	20210101_021651.WAV	20210101_021651_000	20210101_021651_000	PIPPYG	3	3	1.000000	Noise	
39	20210101_024557	20210101_024557.WAV	20210101_024557_000	20210101_024557_000	PIPPYG	2	1	0.500000	Noise	
40	20210101_024557	20210101_024557.WAV	20210101_024657_000	20210101_024657_000	PIPPYG	2	2	1.000000	Noise	
41	20210101_023154	20210101_023154.WAV	20210101_023624_000	20210101_023624_000	PIPPYG	2	2	1.000000	Noise	
42	20210101_032408	20210101_032408.WAV	20210101_034308_000	20210101_034308_000	PIPPYG	2	2	1.000000	Noise	
43	20210101_040713	20210101_040713.WAV	20210101_040738_000	20210101_040738_000	PIPPYG	2	2	1.000000	Noise	
44	20210101_041715	20210101_041715.WAV	20210101_041715_000	20210101_041715_000	PIPPYG	2	2	1.000000	Noise	
45	20210101_040212	20210101_040212.WAV	20210101_040522_000	20210101_040522_000	PIPPYG	2	2	1.000000	Noise	
46	20210101_042717	20210101_042717.WAV	20210101_042717_000	20210101_042717_000	PIPPYG	2	2	1.000000	Noise	
47	20210101_040713	20210101_040713.WAV	20210101_041021_000	20210101_041021_000	PIPPYG	2	2	1.000000	Noise	
48	20210101_052729	20210101_052729.WAV	20210101_053129_000	20210101_053129_000	PIPPYG	2	2	1.000000	Noise	
49	20210101_053230	20210101_053230.WAV	20210101_053420_000	20210101_053420_000	PIPPYG	3	3	1.000000	Noise	
50	20210101_054733	20210101_054733.WAV	20210101_054738_000	20210101_054738_000	PIPPYG	2	2	1.000000	Noise	

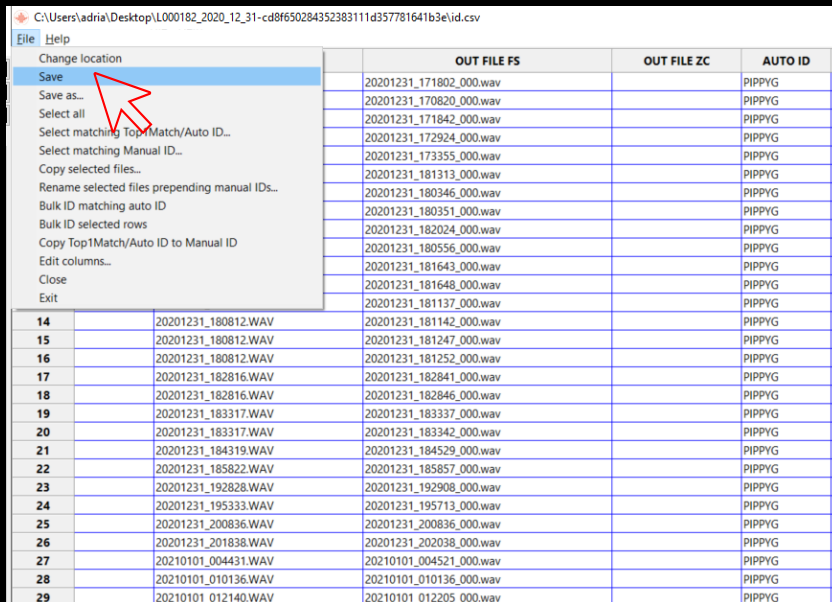
# How to upload the final results of ChiroHabitats

Version 08

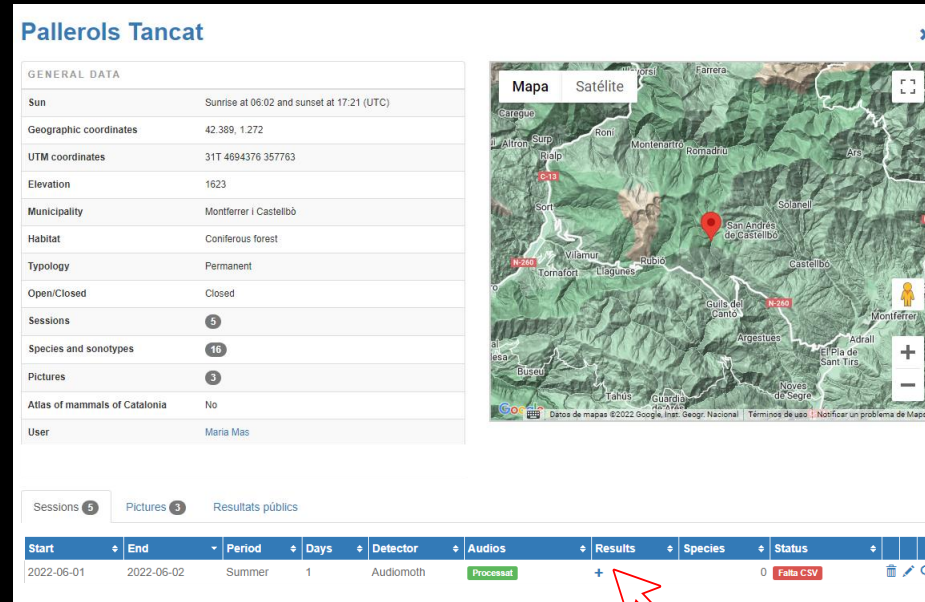
15) Once you have checked all the files, save the results clicking on “File” in the classifications table, and then on “Save”.

16) To upload the final results to the website, enter into your ChiroHabitats locality and click on the “+” symbol that will appear in the “Results” column.

17) Choose the option of classification, if you have checked *Pipistrellus* spp. or not, and select the “id.csv” file from the folder.



	OUT FILE FS	OUT FILE ZC	AUTO ID
14	20201231_180812.WAV	20201231_181142_000.wav	PIPPYG
15	20201231_180812.WAV	20201231_181247_000.wav	PIPPYG
16	20201231_180812.WAV	20201231_181252_000.wav	PIPPYG
17	20201231_182816.WAV	20201231_182841_000.wav	PIPPYG
18	20201231_182816.WAV	20201231_182846_000.wav	PIPPYG
19	20201231_183317.WAV	20201231_183337_000.wav	PIPPYG
20	20201231_183317.WAV	20201231_183342_000.wav	PIPPYG
21	20201231_184319.WAV	20201231_184529_000.wav	PIPPYG
22	20201231_185822.WAV	20201231_192908_000.wav	PIPPYG
23	20201231_192828.WAV	20201231_192908_000.wav	PIPPYG
24	20201231_195333.WAV	20201231_195713_000.wav	PIPPYG
25	20201231_200836.WAV	20201231_200836_000.wav	PIPPYG
26	20201231_201838.WAV	20201231_202038_000.wav	PIPPYG
27	20210101_004431.WAV	20210101_004521_000.wav	PIPPYG
28	20210101_010136.WAV	20210101_010136_000.wav	PIPPYG
29	20210101_012140.WAV	20210101_012205_000.wav	PIPPYG



**Pallerols Tancat**

GENERAL DATA

Sun: Sunrise at 06:02 and sunset at 17:21 (UTC)

Geographic coordinates: 42.389, 1.272

UTM coordinates: 31T 4694376 357763

Elevation: 1623

Municipality: Montferrer i Castellbò

Habitat: Coniferous forest

Typology: Permanent

Open/Closed: Closed

Sessions: 5

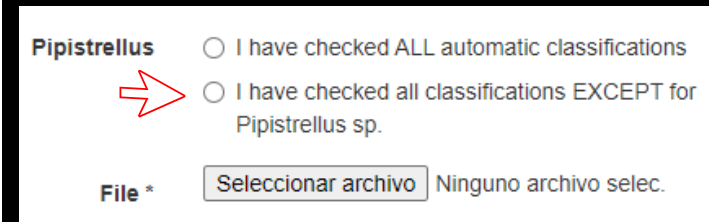
Species and sonotypes: 16

Pictures: 3

Atlas of mammals of Catalonia: No

User: Maria Mas

Start	End	Period	Days	Detector	Audios	Results	Species	Status
2022-06-01	2022-06-02	Summer	1	Audiomoth	Processat	+		0 Falta CSV



**Pipistrellus**

I have checked ALL automatic classifications

I have checked all classifications EXCEPT for Pipistrellus sp.

File \*